



MONTHLY MEMBERSHIP PROGRESS REPORT

District 22 A

Results as of: 06/30/2019

GMT: MAHESH CHITNIS

LOCATION MARYLAND

GMT CA

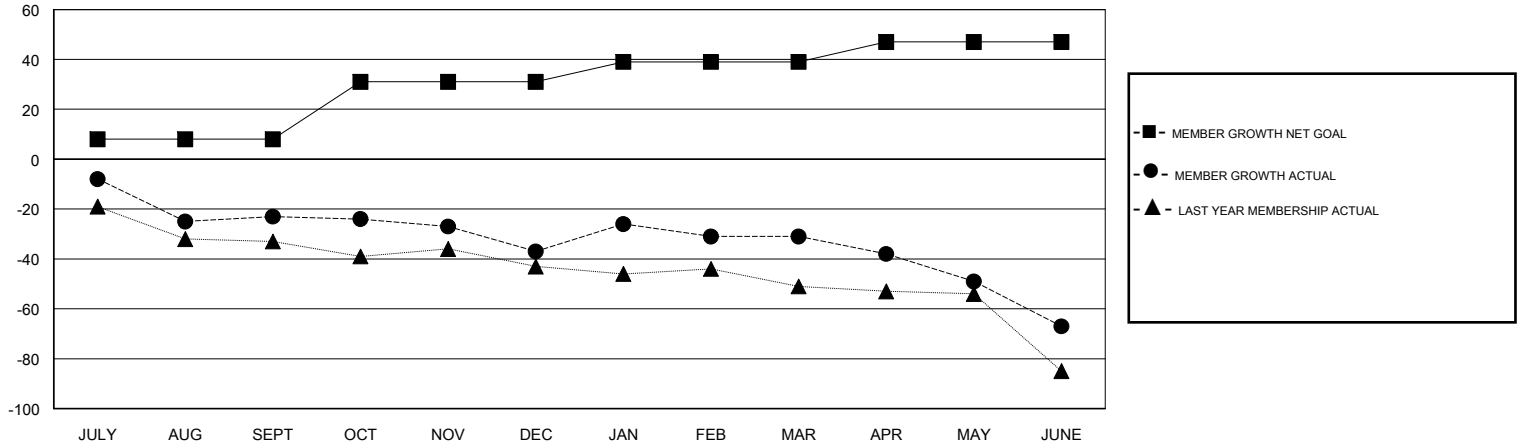
Clubs			
RESULTS FOR 2018-2019			
QUARTER	NEW CLUB GOAL	NEW CLUBS	DROPPED CLUBS
JULY/AUG/SEPT	0	0	0
OCT/NOV/DEC	1	0	0
JAN/FEB/MAR	0	0	0
APR/MAY/JUNE	0	0	1

Members			
RESULTS FOR 2018-2019			
QUARTER	MEMBER GROWTH NET GOAL	MEMBER GROWTH ACTUAL	DROPPED MEMBERS ACTUAL (including transfers)
JULY/AUG/SEPT	8	12	32
OCT/NOV/DEC	23	9	22
JAN/FEB/MAR	8	25	13
APR/MAY/JUNE	8	24	56

GOALS AND ACTUAL NEW CLUBS CUMULATIVE



GOALS AND ACTUAL MEMBERS CUMULATIVE



DROPPED CLUBS: 1	18 CLUBS OF 28 ADDED 1 OR MORE NEW MEMBERS	<u>GENDER DISTRIBUTION</u> MALE 454 (64.21%) FEMALE 253 (35.79%) Women Percentage Fiscal Year Goal: 2%
<u>DROPPED MEMBERS</u> DECEASED 16 CLUB CANCELLED 6 OTHER 101 TOTAL 123	CLICK HERE FOR CUMULATIVE MEMBERSHIP DATA	TOTAL FAMILY UNIT MEMBERS 132 FAMILY MEMBERS PAYING HALF DUES 68